



COTA CAR CONDOS

A red Ferrari sports car is parked on a paved area in front of a modern gate. The gate has a large 'T11' sign in the center. The gate is made of vertical metal bars and is framed by a dark structure with red accents. The background shows a building and some greenery.

COTA CAR CONDOS

Located at Austin's famous Turn 11 at Circuit of The Americas, T-11 car condos will be a unique opportunity to house your vehicles at a world-class destination for motorsports and entertainment. T-11 features a clubhouse and amenity space accessible to all car condo members, including a pool, outdoor lounge, grills, club room, conference rooms, showers, outdoor plaza, and on-site management office.

MAIN BOULEVARD





CLUBHOUSE



PREMIUM GARAGE



MAIN LAWN



MEMBERS POOL



COMMUNITY AERIAL

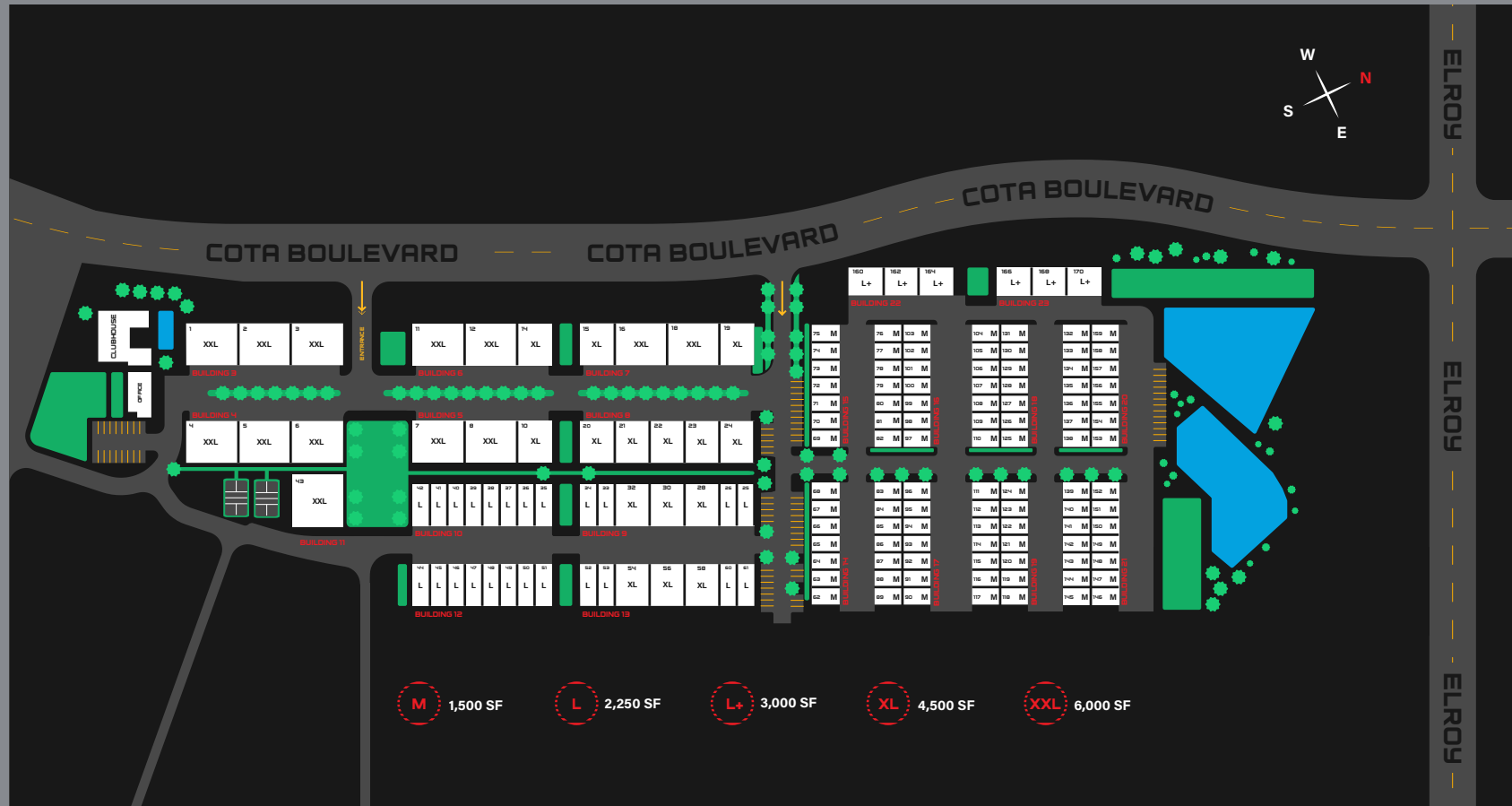
PERKS OF OWNERSHIP

CIRCUIT OF THE AMERICAS

- (2) Weekends of Dedicated Track Time
- Private Viewing Deck at Turn 11
- Event Pre-Sale Opportunities

T11 FACILITIES

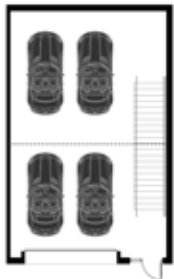
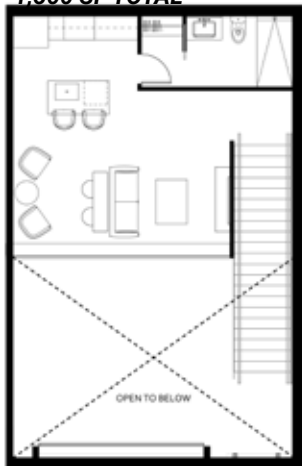
- EV Charging Stations
- Community Events
- Swimming Pool
- Owner's Lounge
- Meeting Rooms



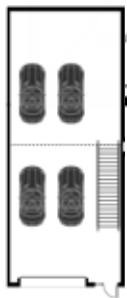
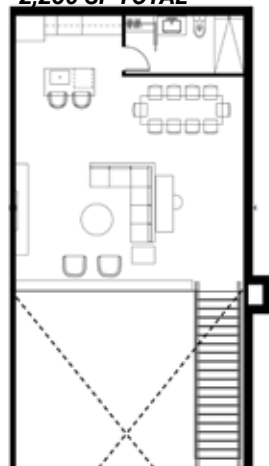
* Discount capped at \$2.50 a square foot per garage annually.

AVAILABLE FLOOR PLANS

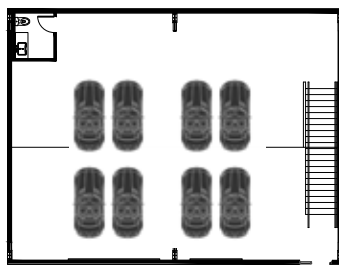
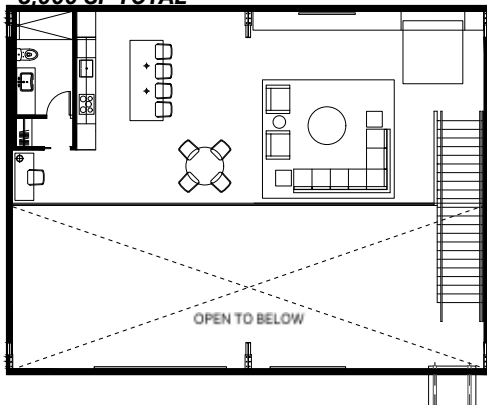
MEDIUM UNIT
1,500 SF TOTAL



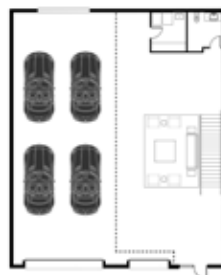
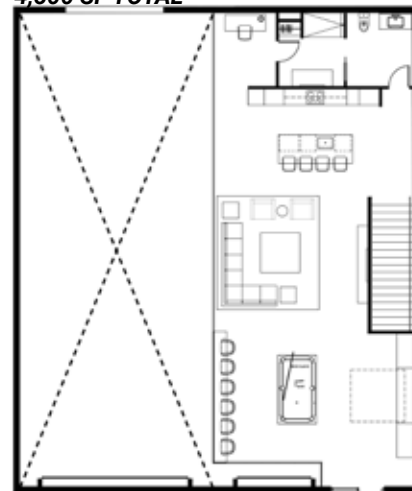
LARGE UNIT
2,250 SF TOTAL



LARGE + UNIT
3,000 SF TOTAL



X LARGE UNIT
4,500 SF TOTAL



XX LARGE UNIT
6,600 SF TOTAL

