



COTA CAR COMMUNITY

DIGITAL BROCHURE



T11 COTA CAR COMMUNITY

Located at Austin's famous Turn 11 at Circuit of The Americas (COTA), T11 COTA Car Community will be a unique opportunity to house your vehicles at a world-class destination for motorsports and entertainment. T11 features a clubhouse and amenity space accessible to all car condo members, including a pool, outdoor lounge, grills, clubroom, conference rooms, showers, outdoor plaza, and on-site management office.



MAIN BOULEVARD



CLUBHOUSE



PREMIUM GARAGE



MAIN LAWN



MEMBERS POOL



COMMUNITY AERIAL

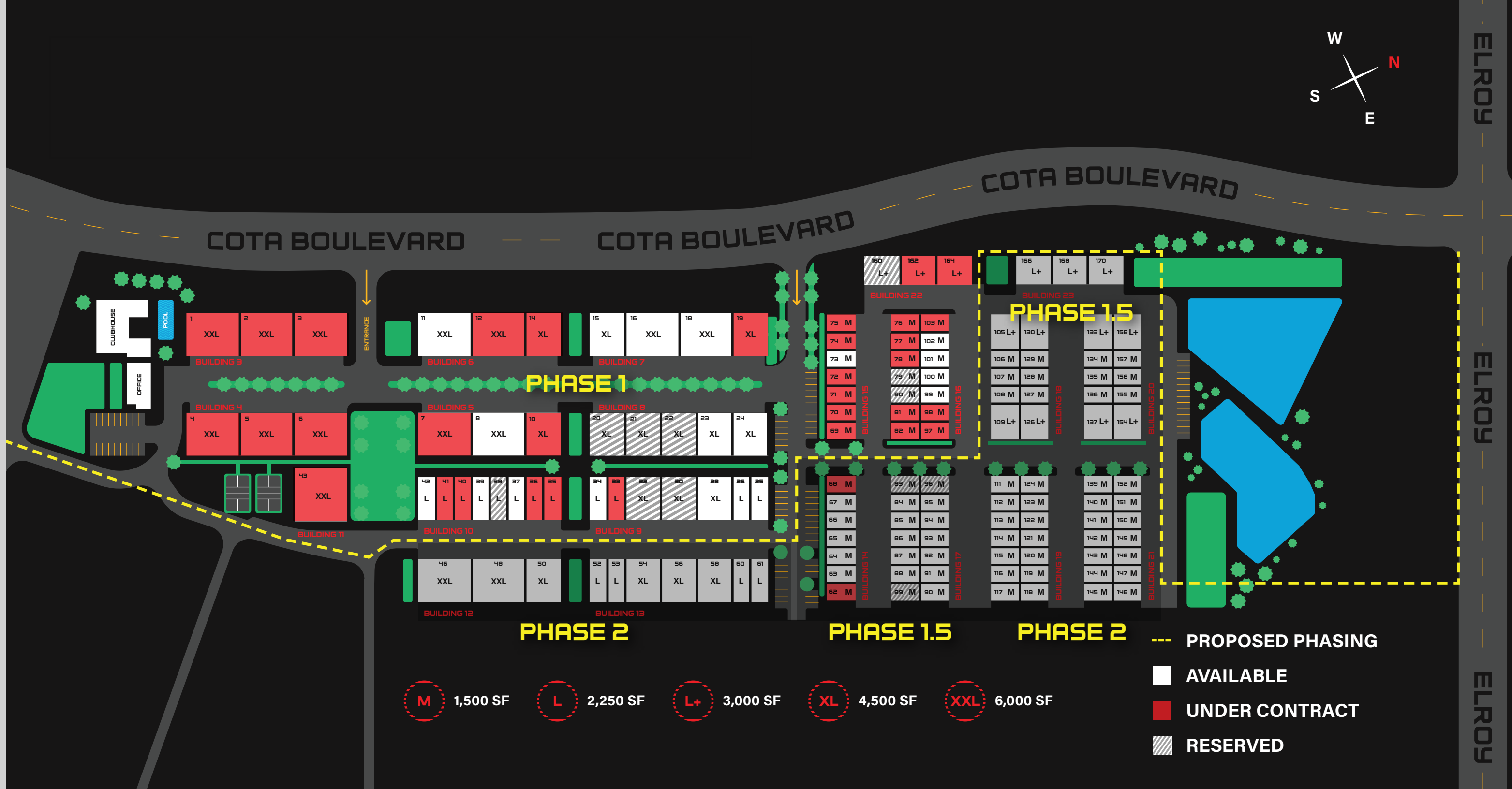
PERKS OF OWNERSHIP

CIRCUIT OF THE AMERICAS

- x2 Weekends of Dedicated Track Time
- Private Viewing Deck at Turn 11
- Event Pre-Sale Opportunities

T11 FACILITIES

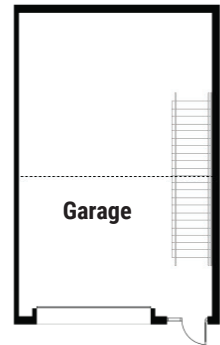
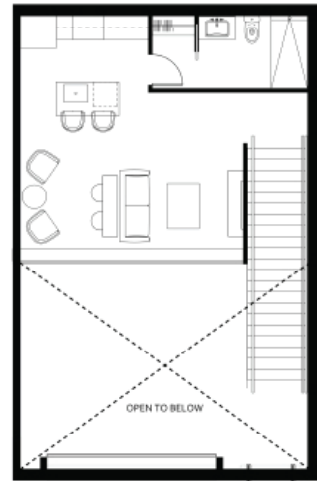
- EV Charging Stations
- Community Events
- Swimming Pool
- Owner's Lounge
- Meeting Rooms



AVAILABLE FLOORPLANS

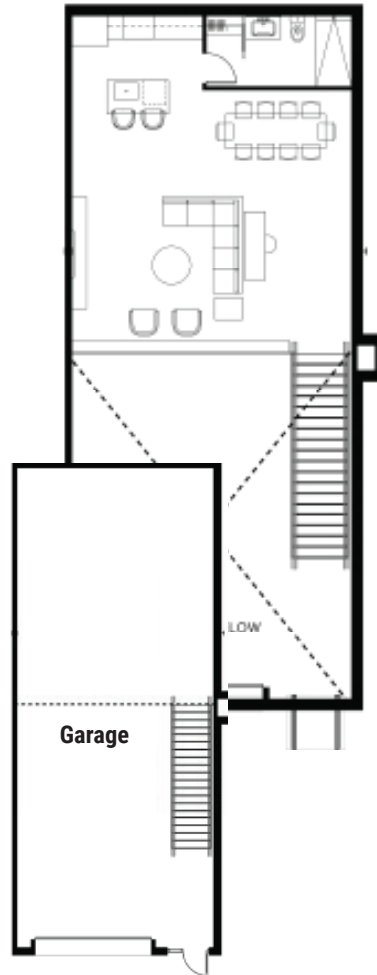
MEDIUM UNIT

1,500 SF Total



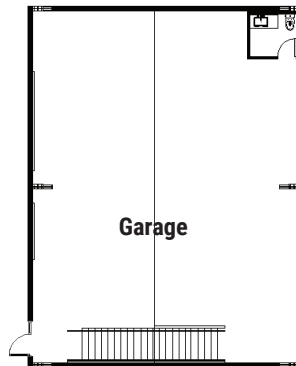
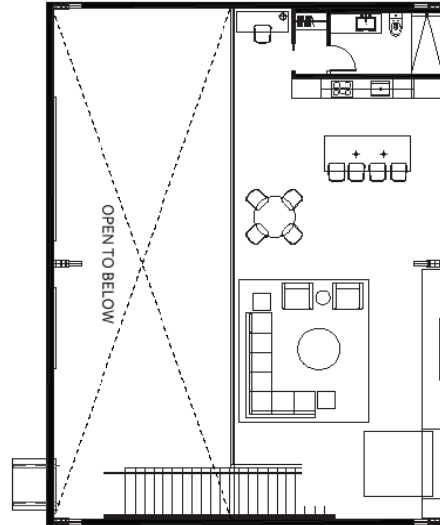
LARGE UNIT

2,250 SF Total



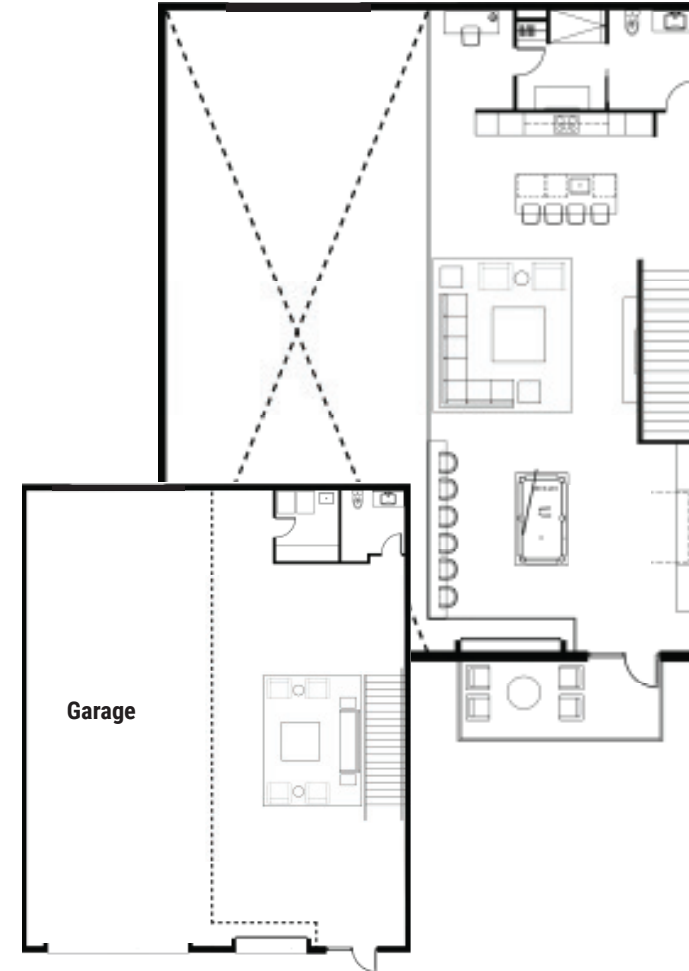
LARGE+ UNIT

3,000 SF Total



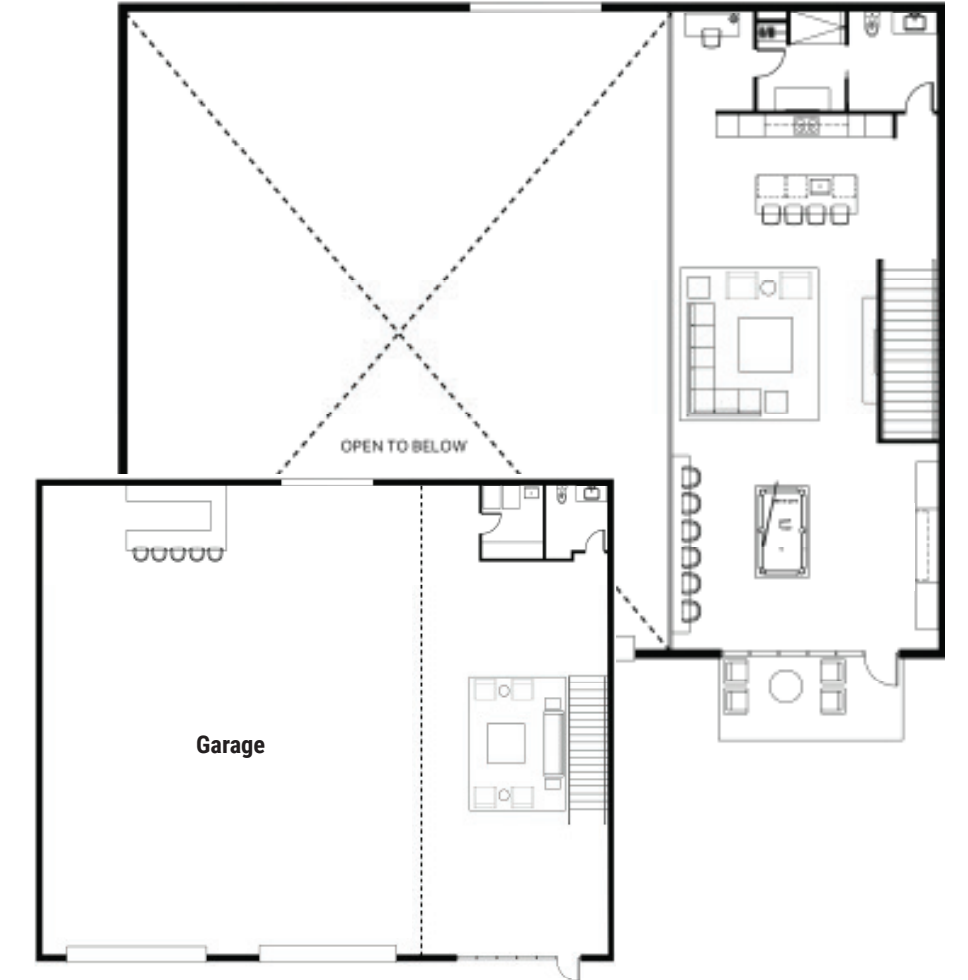
X LARGE UNIT

4,500 SF Total



XX LARGE UNIT

6,000 SF Total



FLOOR PLANS ARE NOT TO SCALE, DIMENSIONS ARE APPROXIMATE, AND MAY VARY FROM THE DESCRIPTION OF THE UNIT IN THE CONDOMINIUM DECLARATION AND THE PURCHASE CONTRACT. FLOOR PLANS MAY BE ATTACHED TO THE PURCHASE CONTRACT AS REPRESENTATIVE OF THE UNIT, BUT WILL NOT BE CONSTRUED AS A DESCRIPTION OF THE UNIT FOR CONVEYANCE OR CONTRACT PURPOSES. FLOOR PLANS, INCLUDING ROOM LAYOUTS AND THE CONFIGURATION AND LOCATION OF APPLIANCES, CABINETS, CLOSETS, PLUMBING FACILITIES, AND OTHER IMPROVEMENTS SHOWN WITHIN THE UNIT ARE SUBJECT TO CHANGE. PLEASE REVIEW THE CONDOMINIUM DECLARATION AND PURCHASE CONTRACT FOR A DESCRIPTION OF HOW THE UNITS ARE MEASURED. YOU SHOULD REVIEW THE ACTUAL MATERIALS PRIOR TO MAKING ANY FINISH OR UPGRADE SELECTIONS.



T11CARCONDOS.COM | SALES@T11CARCONDOS.COM